

ON THE JOY ZONE

1915

At the Panama Pacific International Exposition



On the Joy Zone at the Panama Pacific International Exposition 1915

A Postcard and Photographic Tour by Glenn Koch

This is Part 3 of 4

On the Joy Zone: Part 1 of 4

http://www.postcard.org/ppie_zone/ppie_zone_part_1_of_4.pdf

On the Joy Zone: Part 2 of 4

http://www.postcard.org/ppie_zone/ppie_zone_part_2_of_4.pdf

On the Joy Zone: Part 3 of 4

http://www.postcard.org/ppie_zone/ppie_zone_part_3_of_4.pdf

On the Joy Zone: Part 4 of 4

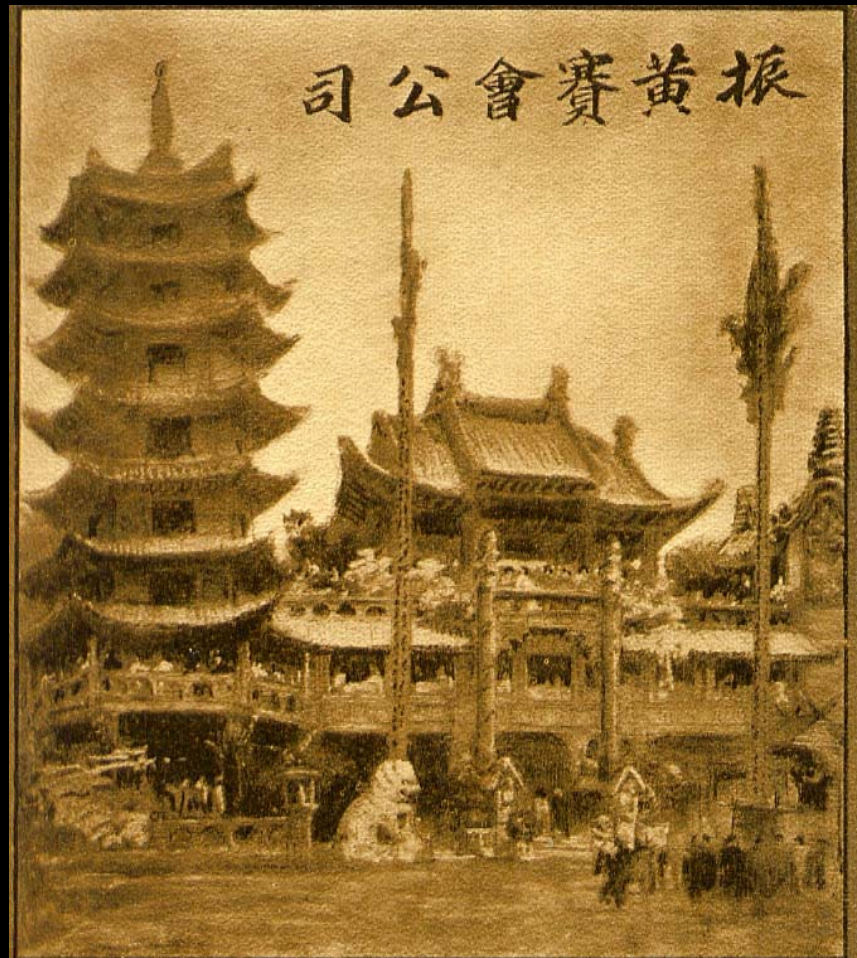
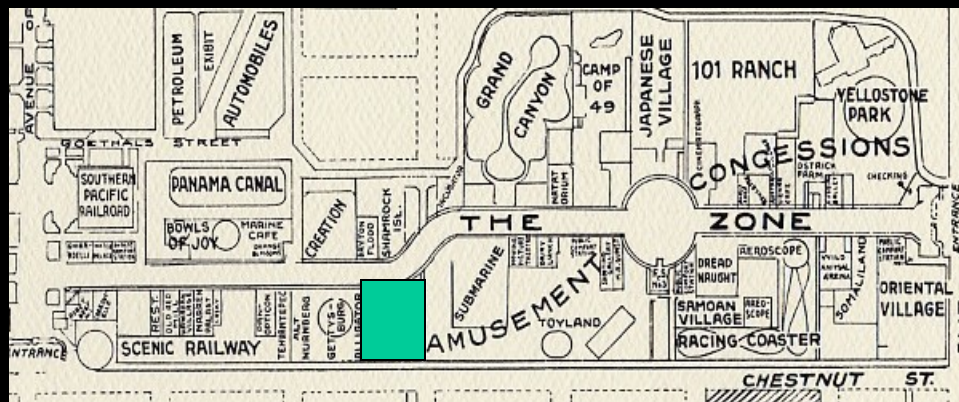
http://www.postcard.org/ppie_zone/ppie_zone_part_4_of_4.pdf

Chinese Village, Pagoda and Tea Garden on the Zone
PAN.-PAC. INTER. EXPO. SAN FRANCISCO, 1915



**Chinese Village, Pagoda and Tea Garden on the Zone, Published by
Cardinell-Vincent Co.**

**Chinese Village, Pagoda and
Tea Garden, “The Zone”
Published by Cardinell-
Vincent Co.**

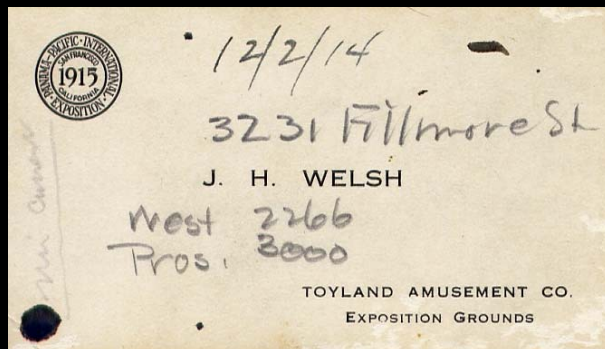


◀ Chinese Village ▶
Pagoda and Tea Garden
“THE ZONE”
Panama-Pacific International Exposition
◀ 1915 ▶



Number 29, Toyland
P.P.I.E, Real Photo
Postcard, Publisher
Unknown

Number C25, Crowds on the
Zone in Front of Toyland,
Postcard published by
Cardinell-Vincent



Toyland Business Card





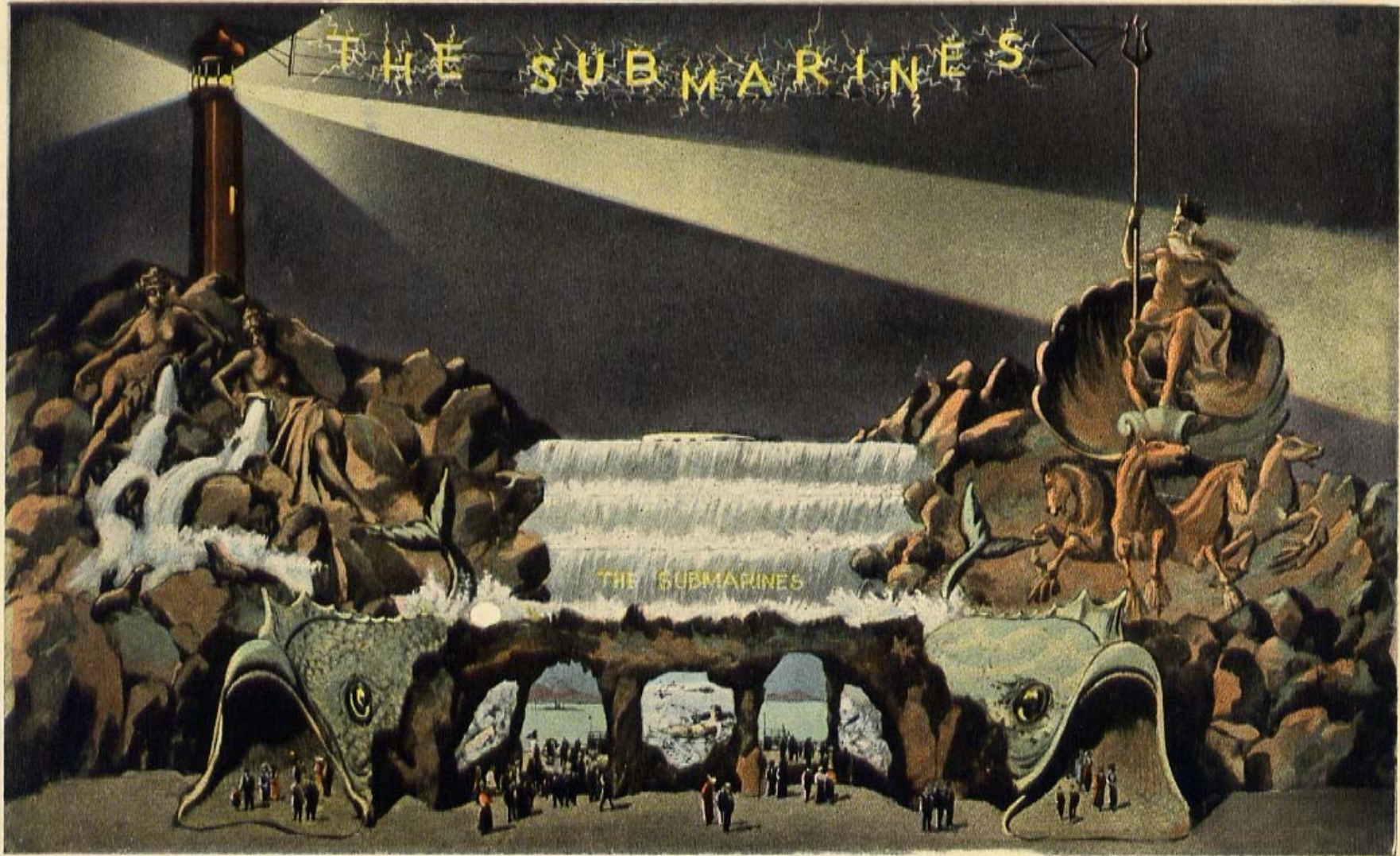
Unidentified Photograph showing the Noah's Ark Structure Located within the Main Entrance of "Toyland Grown Up" that housed the Offices of Toyland, and also was the Showplace of Elizabeth the Living Doll.

Message on a postcard of Elizabeth: "*September 2, 1915. Souvenir from Elizabeth Weiss, 22yrs, 32 inch, 27lbs*"



Both Real Photo Postcards "From the Studios of R.P. Whigham, 739 Market Street and 1615 Fillmore Street"

PANAMA-PACIFIC INTERNATIONAL EXPOSITION, SAN FRANCISCO, 1915.

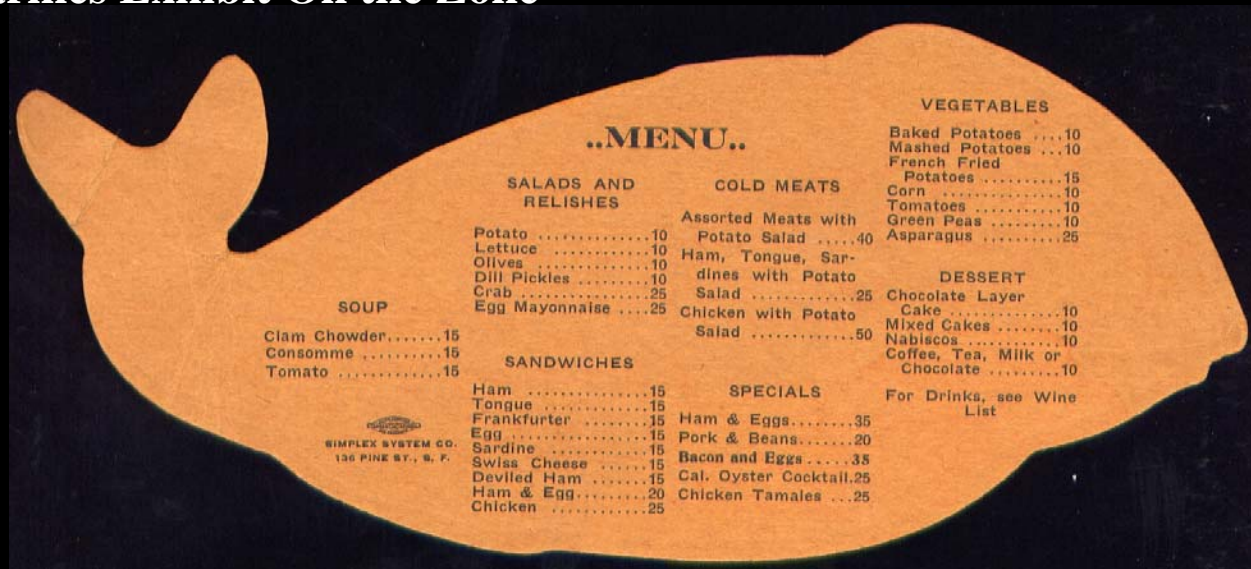


1507. THE SUBMARINES, A WONDERFUL AMUSEMENT CONCESSION ON "THE ZONE".

Number 1507, The Submarines, Published by Cardinell-Vincent Co.

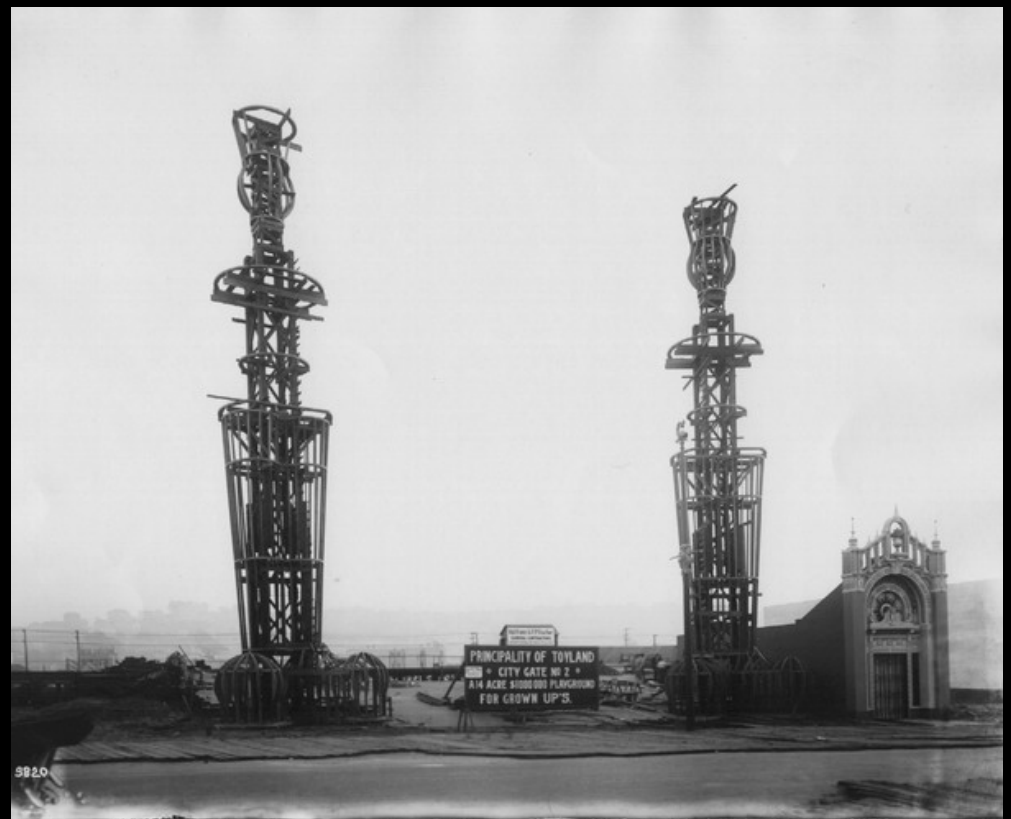


A menu from the Isle of Delights Café which was located within the Submarines Exhibit On the Zone





No. 17, Hand-Colored, “On the Zone”, Published by Charles Weidner



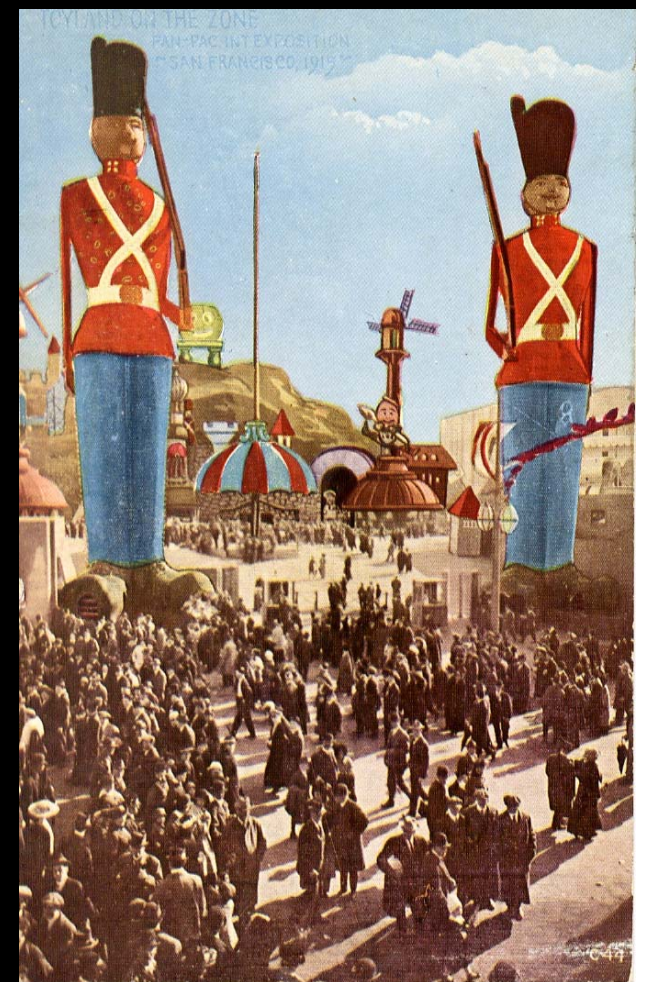
Photograph showing the “Principality of Toyland” during the first stages of construction

No. 56, P.P.I.E S.F. 1915, Unidentified Publisher

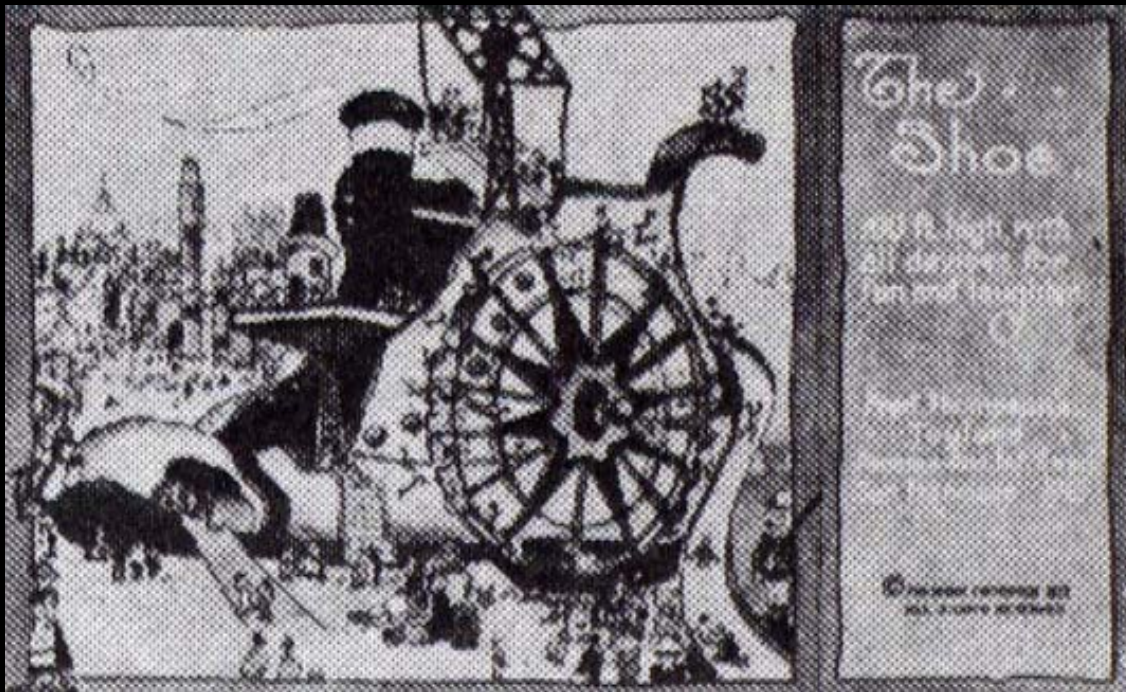


#19, Toyland, World's Fair, 1915, unidentified Publisher, Real Photo Postcard

#26, Toyland, PPIE, unidentified Publisher, Real Photo Postcard

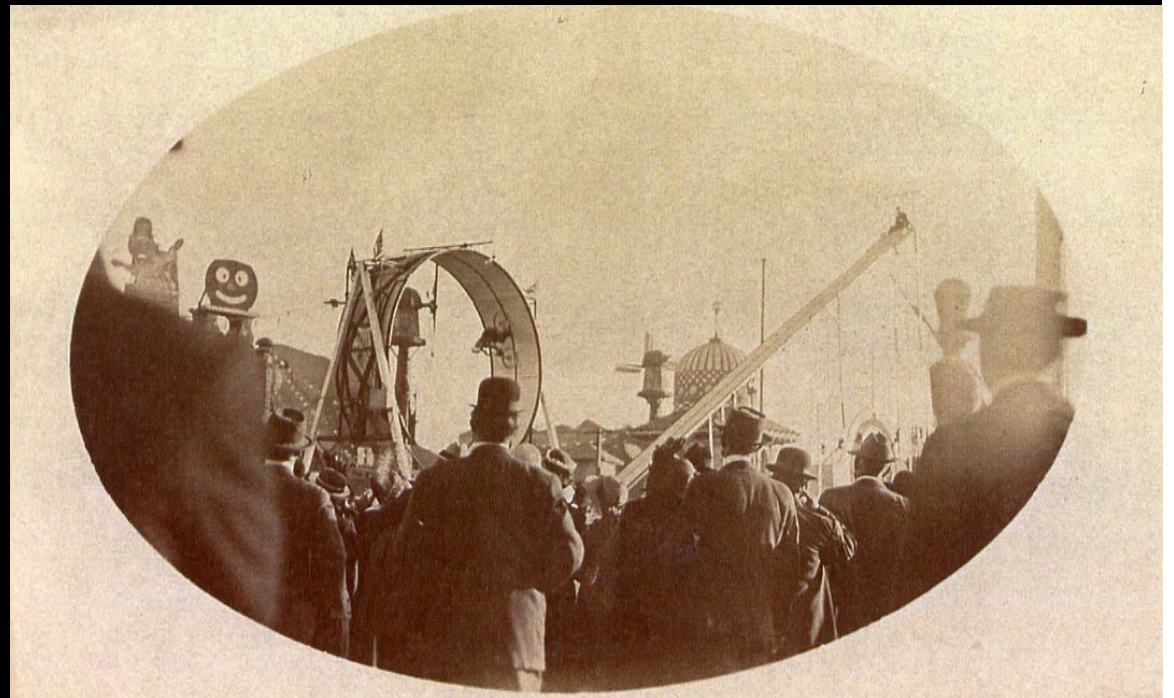


C-44, Toyland On The Zone, Cardinell-Vincent Publishers



Postcard showing “The Shoe” in the Toyland Concession, as it appears in Megson’s American Exposition Postcards Book. One of a series of 8 cards of these Toyland attractions by Cardinell-Vincent.

A Real Photo Postcard by an Anonymous Photographer Showing a Loop-de-Loop Cyclist performing within the Toyland attraction. *Postcard courtesy of Jack Hudson*





Pillsbury Photo Company, Number 1604, “In The Zone”



**Anonymous Real Photo Postcard, The Grand Canyon of Arizona,
constructed by the Atchison, Topeka & Santa Fe Railway**

Indian Village, Pan. Pac. Int. Expo., San Francisco.



**The Indian Village,
Constructed on the Roof
of the Grand Canyon
Exhibit Building**

Pacific Novelty Company,
number X-47, Indian Village,
shown on left

Number 1067, Published
by Fred Harvey, Oven and
Trail looking West, Indian
Village, *shown on right*

Panama-Pacific International Exposition, San Francisco, California.
Oven and Trail looking West, Indian Village.





Panama - Pacific
International
Exposition,
San Francisco,
California.

Santa Fe's
Grand Canyon
Exhibit.

Trail
looking East,
Indian Village.

Number 1064, Published by Fred Harvey, Santa Fe's Grand Canyon Exhibit, Trail looking east, Indian Village. A Similar set of cards was also done for the San Diego fair

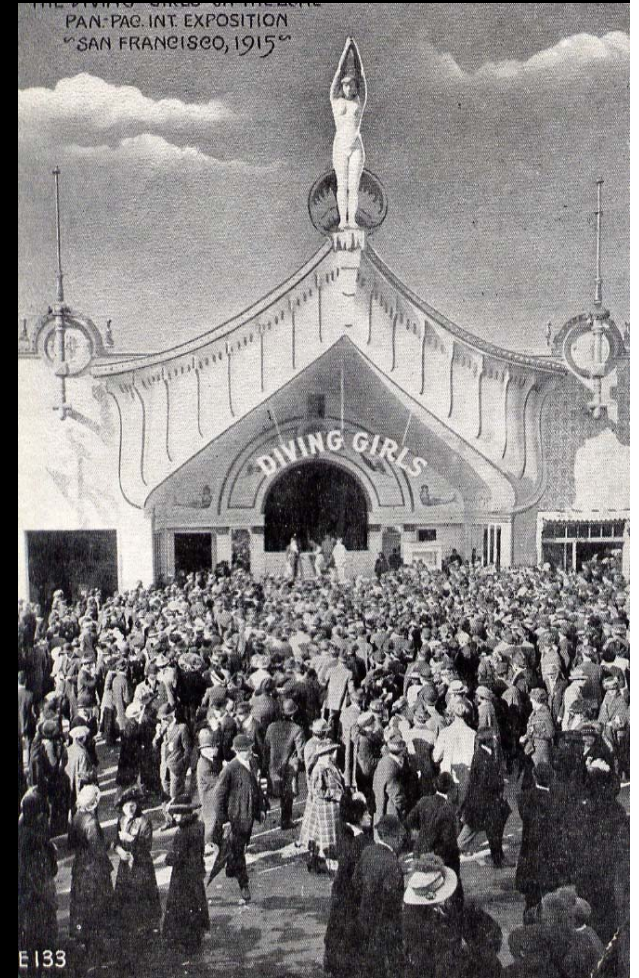
The Diving Girls at Neptune's Palace



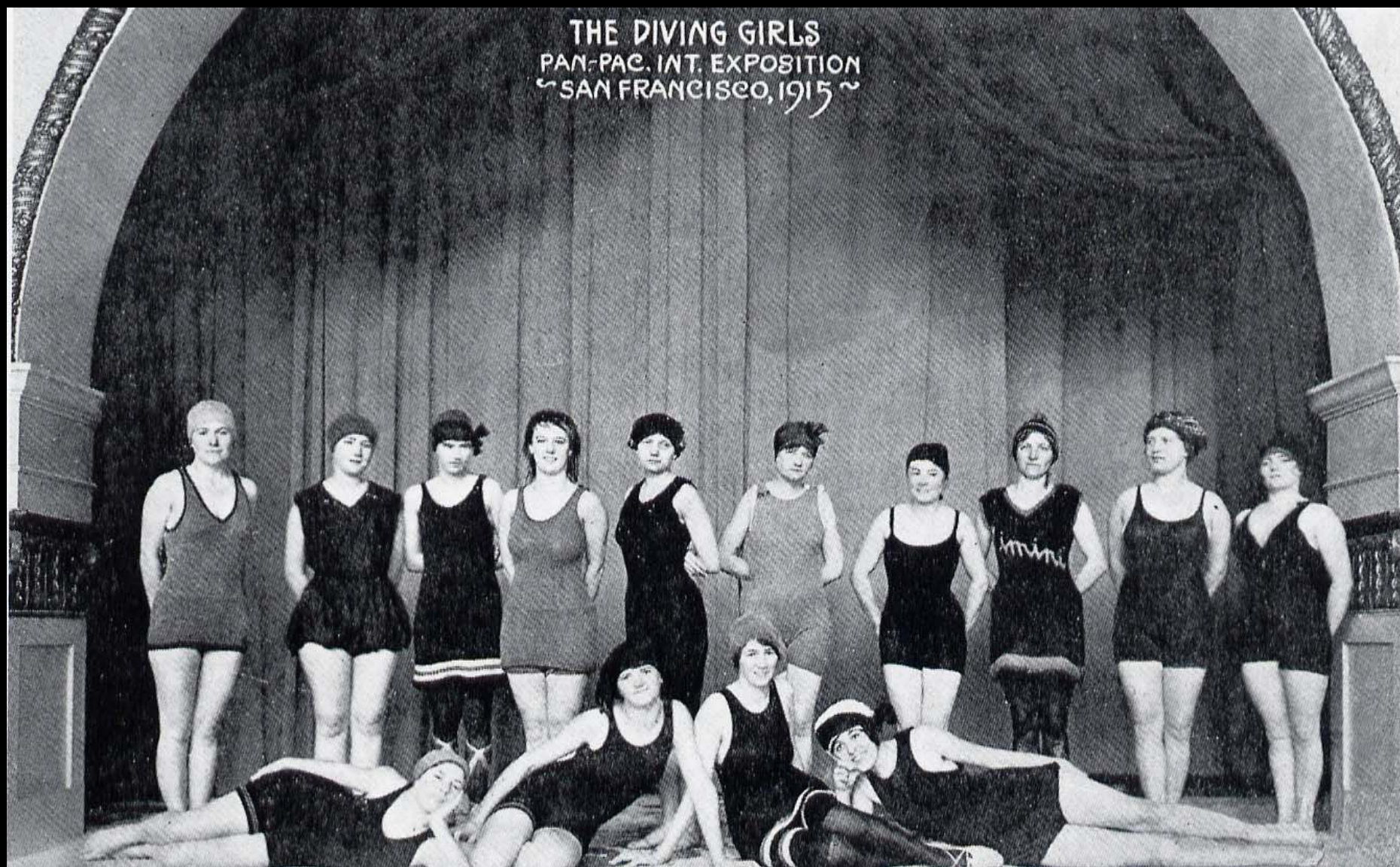
#116, Unidentified Publisher,
Real Photo Post Card



Real Photo Postcard,
Unidentified Photographer,
Courtesy of Jack Hudson



Number E-133, The Diving
Girls On The Zone,
Cardinell-Vincent Publishers



The Diving Girls On The Zone, Published by Cardinell-Vincent



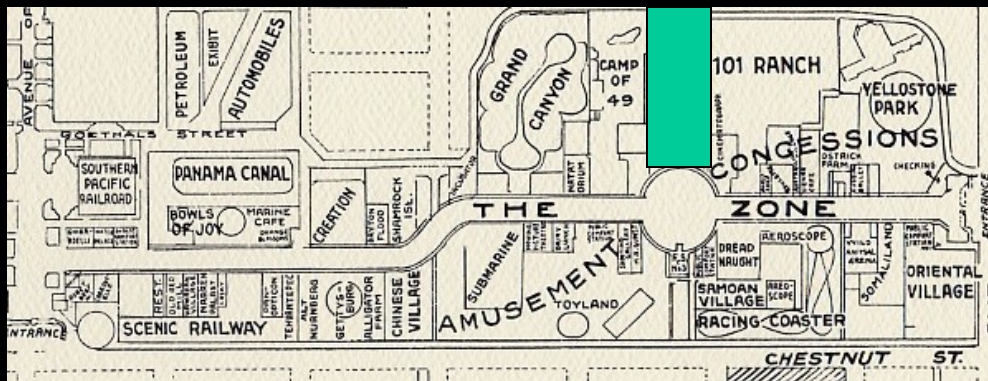
**Number E 77, Birds Eye View of Exposition Grounds, Real Photo Post Card
by Cardinell-Vincent**



**Entrance To 49 Camp On The
Zone, Unnumbered Cardinell-
Vincent Real Photo Post Card**



Japan Beautiful



**#166, Entrance To Japan
Beautiful, P.P.I.E., Unidentified
Publisher. Real Photo Postcard,
*Postcard Courtesy of Jack Hudson***



PANAMA-PACIFIC INTERNATIONAL EXPOSITION, SAN FRANCISCO, 1915.



1505. JAPAN BEAUTIFUL ON "THE ZONE".

Number 1505 (RA-54824) Japan Beautiful on "The Zone",
Published by Cardinell-Vincent

Number X-45, Entrance to
Japan Beautiful, Published by
Pacific Novelty Company





Two Unidentified Real Photo Post Cards



Number 25, Mount Fujiyama in Japan Beautiful, PPIE, Real Photo Post Card, Unidentified Publisher